

Education in People's Republic of China

Qi Cui

Indiana State University

About People's Republic of China (PRC)

- PRC was founded in October 1, 1949
- Population: 1.3 billion
- Official language: Putonghua
- Capital city: Beijing
- Government: Central government – province/autonomous regions/directly administered municipalities/SARs(34) – city – county – villages and towns

In School Students(2007 data)

- Enrolment: 321,870,000
- Educational population: 338,620,000
- Proportion of educational population:
25.8%

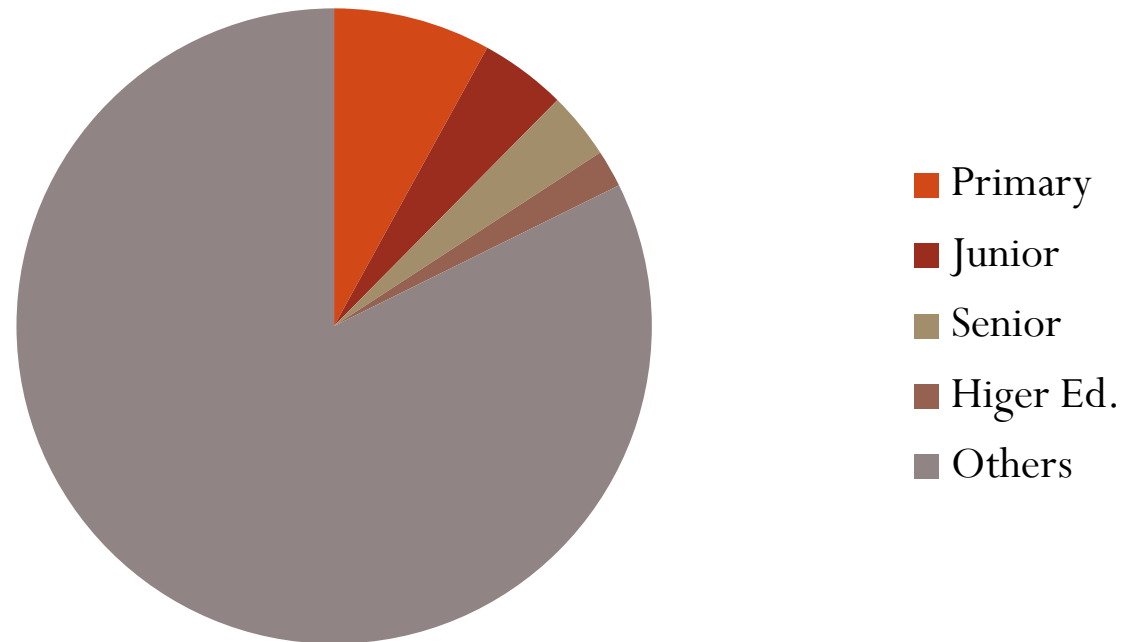
Data are from www.moe.edu.cn

In School Students(2007 data)

- Unit: 1,000 St: 177 (P: 80 J: 44 S: 34 H: 19)

Data are from www.moe.edu.cn

population:1,000



Organization

- Pre-school
- Primary school (1-6)
- Junior high school (7-9)
- Senior high school
- Higher education

Administration

- Ministry of education
- Provincial department of education
- Municipal department of education
- County's department of education
- Villages' and towns' department of education

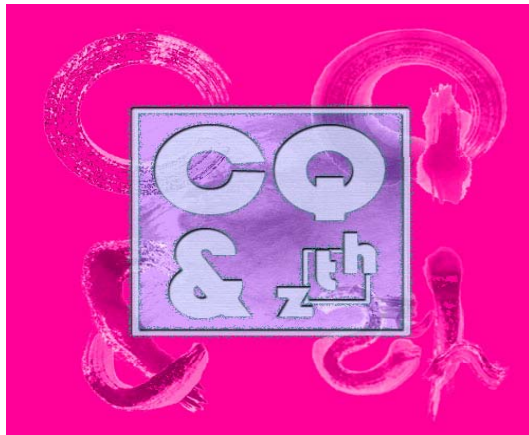
Educational Belief

- Confucius' influence
- Imperial competitive examination
- Standardized examination: college entrance examination 3+ X
- Three goals and “three-good” students
 - patriotic assembly, body and eye exercise, cleaning on duty, friendship and bravery
- Quality education and curriculum reform
 - Syllabus - curriculum - textbook

Teaching Approach

- Teacher's role
- Student's perspective
- Parent's position
- Example: English as a Foreign Language (EFL)

Questions?



Thanks!